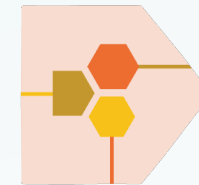
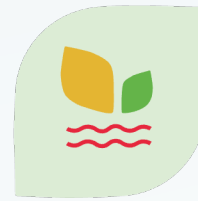
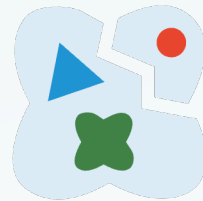
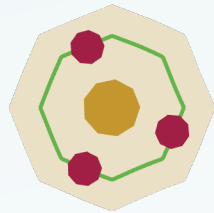
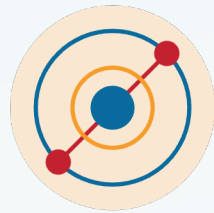


SUSTAIN 2030

THERE IS NO PLANET B – SO WE NEED A

PLAN B



AN INTERACTIVE SDG - IDG - EARTH4ALL SIMULATION

A PLAN B FOR OUR FUTURE

The 17 Sustainable
Development Goals

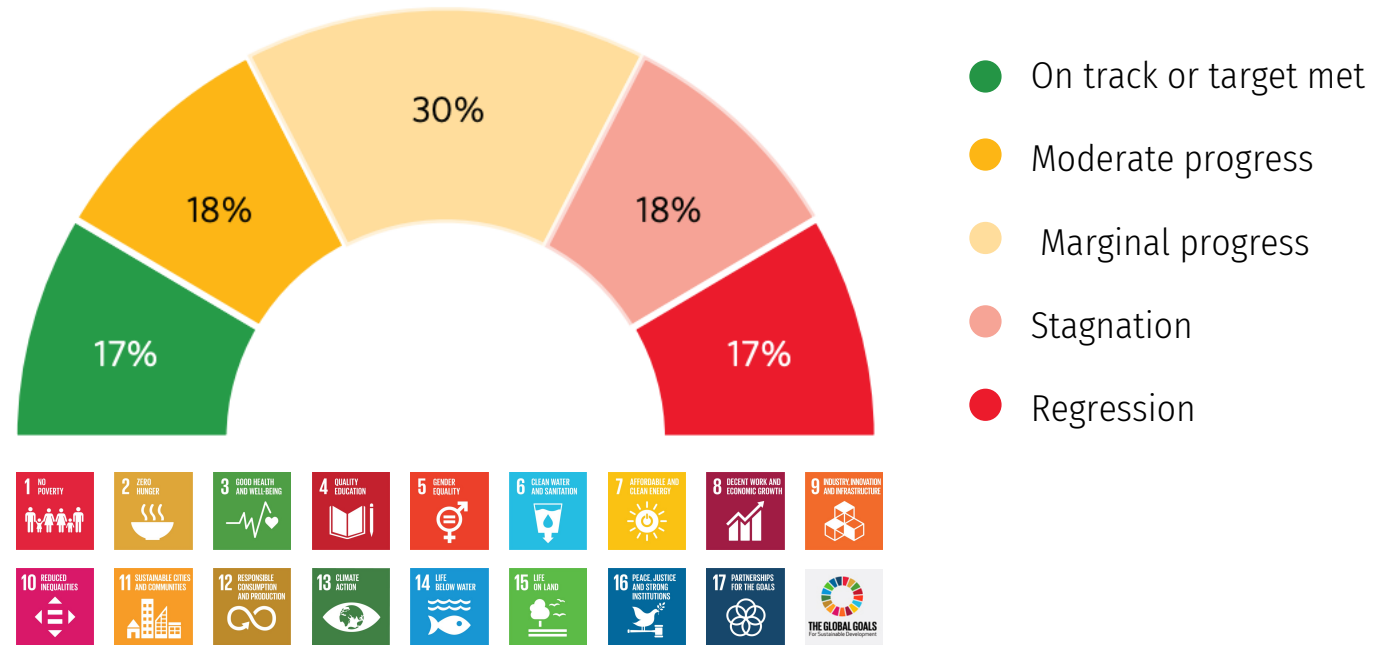


PLAN A

is not working

We will not achieve our goal with the efforts made so far.

Progress towards achieving the 17 SDGs (2015 - 2024)

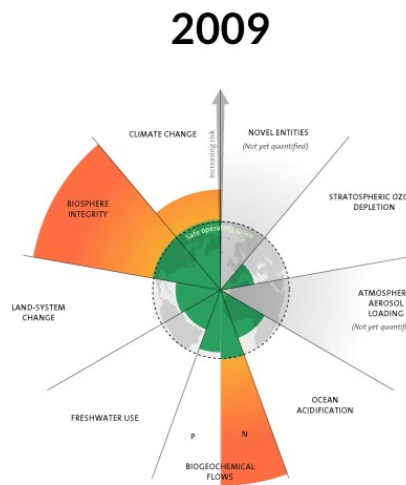


PLAN A

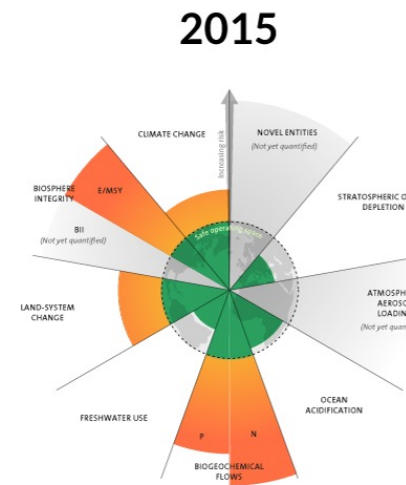
is not working

Our current actions are leading us in the wrong direction.

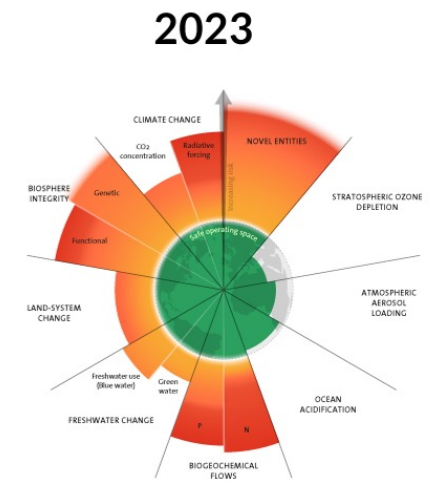
Overshooting planetary boundaries



3 boundaries crossed



4 boundaries crossed



6 boundaries crossed

So we need a **PLAN B**

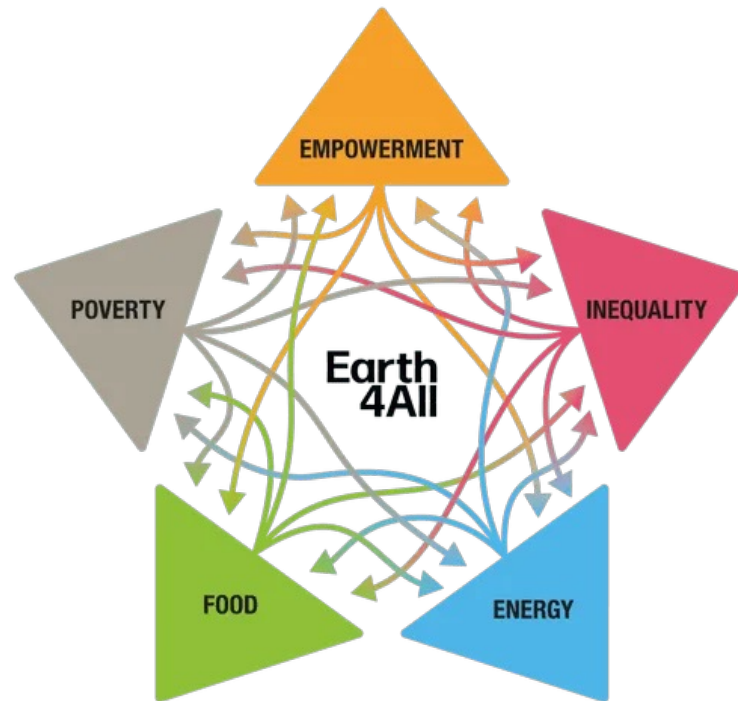
How do we achieve the 17 Sustainable Development Goals?



We will only achieve our goal by breaking new ground.

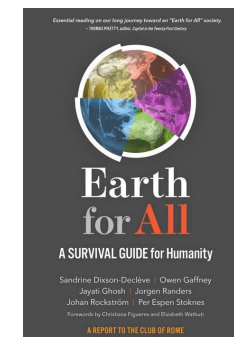
So we need a **PLAN B**

The good news:
The necessary change
is possible.



Earth4All - five extraordinary turnarounds to ensure the wellbeing for all on a stable planet.

Real systems change to rethink economic growth as a measure of progress and shift our societies on a safe pathway to wellbeing for all.



inspired by
Earth 4All

» earth4all.life

Plan B

for our future



SDGs

Sustainable Development Goals

Global vision for sustainable development

Where are we heading?

IDGs

Inner Development Goals

Skills and competencies that enable joint action

How will we get there?

Sustainability as a way of thinking and acting



Establishment of a
Global Development Panel

Sustainable Development

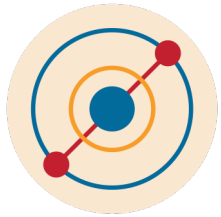
The Outer How can we shape the transformation of existing systems?

➔ **ANNUAL DECISIONS**

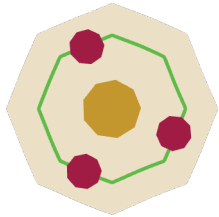
The Inner How can we shape global cooperation?

➔ **REFLECTION EVERY 3 YEARS**

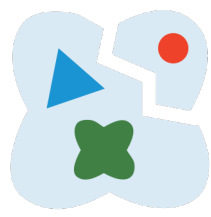
Welcome to the **Global Development Panel**



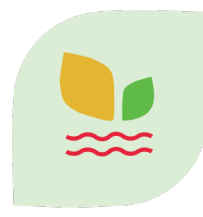
HARMONIA



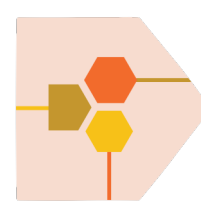
MINERALIA



INSULARIA



AGRICURA



TECHNOVA



SDG AGENTS

The **5 alliances** are associations of countries that face similar challenges and share common interests

SDG AGENTS are experts for the implementation of the SDGs

Action Plans and Global SDG Commitment

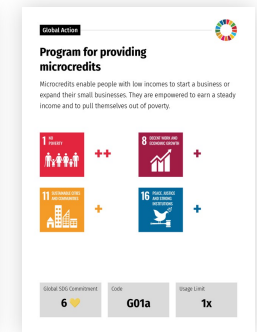
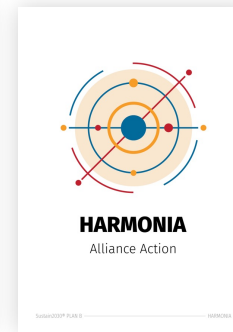


Action Plans come into force as soon as they have been adopted by all five alliances.

Effects of Action Plans:

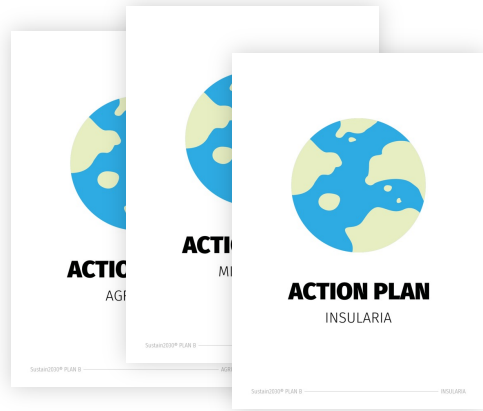


Unlocking additional actions and Action Plans

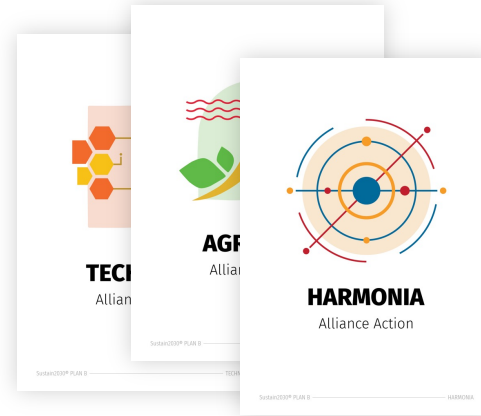


Providing **Global SDG Commitment** (❤️)

3 Types of action cards



Action Plans are agreements by the alliances to tackle specific global challenges.



Alliance Actions are measures that can be implemented independently by the alliances.



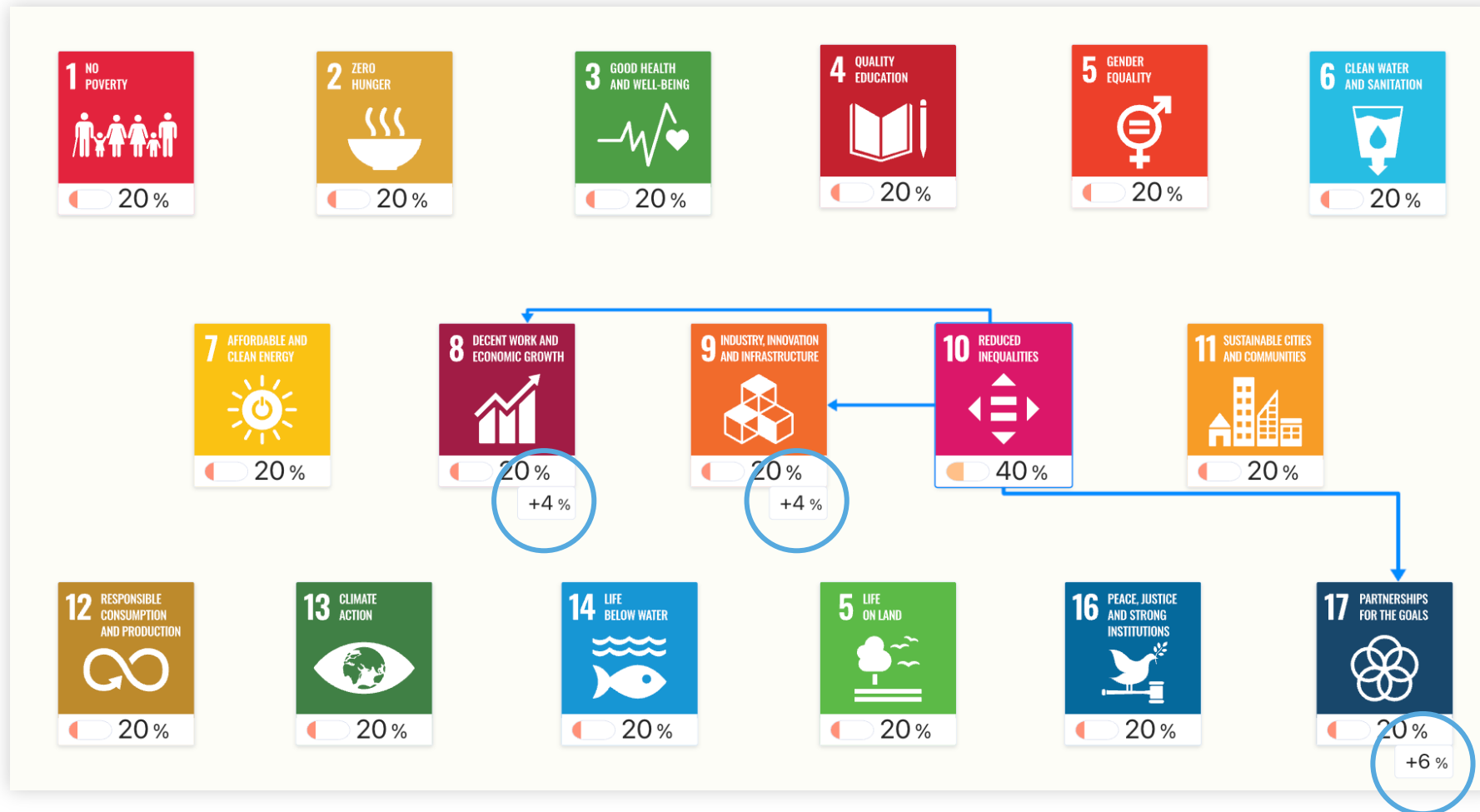
Global Actions require global commitment and are implemented by the SDG Agents.

Direct and indirect effects



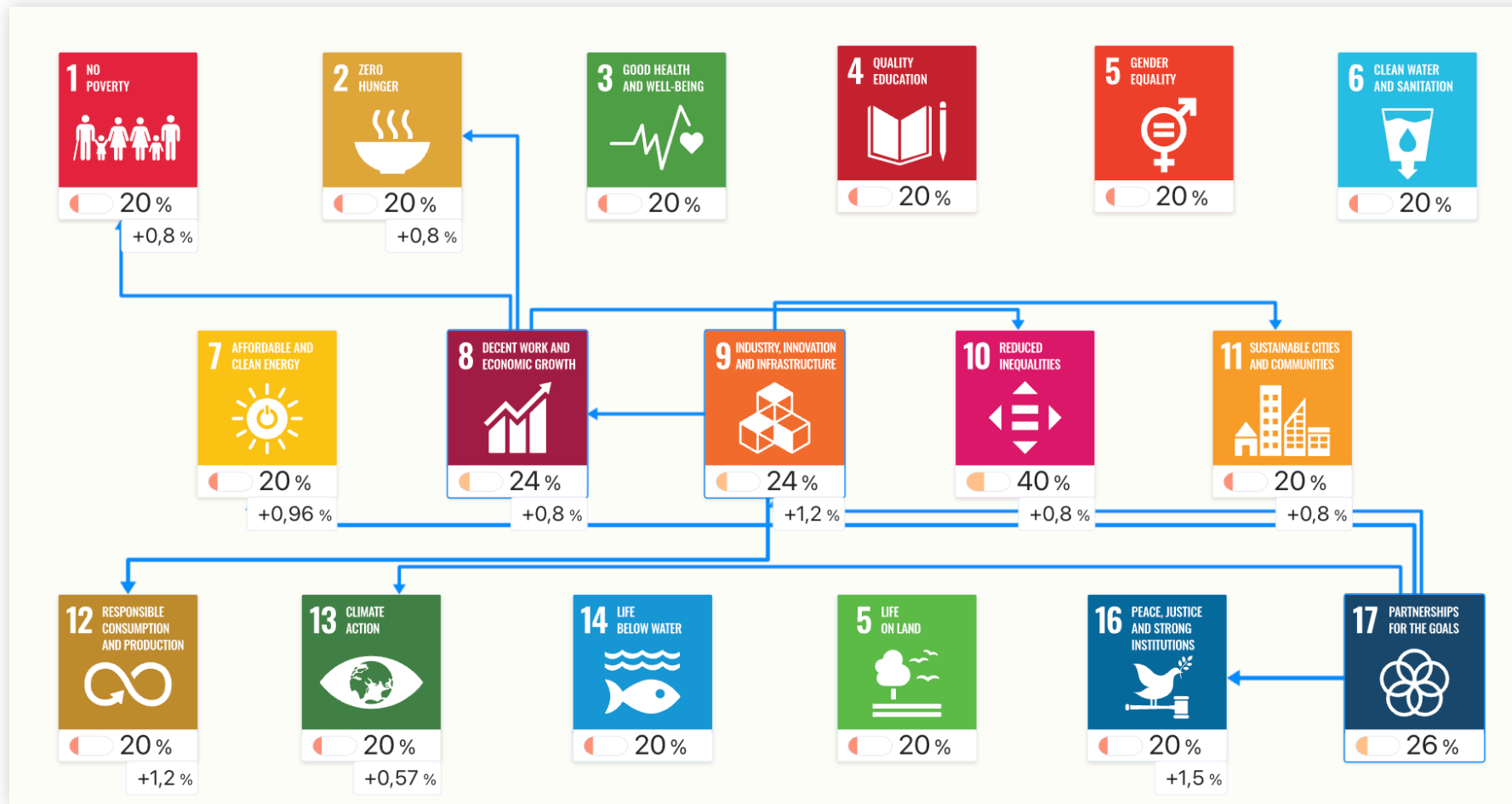
Actions and events have a direct impact on the achievement of certain SDGs.

Direct and indirect effects



The change to this SDG will affect other SDGs in the next round.

Direct and indirect effects



These impulses continue, so that long-term effects are also possible.

All active impulses in the system are thus calculated together.

Events



Event

Social tensions have increased

Description

Social tensions have intensified significantly worldwide. The increasing inequality and widening gap between rich and poor are exacerbating conflicts between political camps and ideologies, between society and nature, between urban and rural areas, between generations and, not least, between the genders.

Effects

SDG16 | Peace, Justice and Strong Institutions

--

SDG17 | Partnerships for the Goals

-

Hide this during further simulation process

OK

Events are **external influences** that can always occur at the beginning of a year.

Your decisions influence how many and how intense events are that you will face.

Read events carefully: they provide valuable **information** on risks and the need for action.

A PLAN B FOR OUR FUTURE

Will you succeed in
achieving the SDGs?



» LET'S PLAY!